

Application for Participation

*Associated Schools Project (ASP)
for Promoting International Education*

Outline of the way the Project(s) will be implemented in the institution

「The Project to Save Our Town and Our Planet」
～Protect Lake Namazu and protect our region～

1. Description of the Project

This school has been implementing community based educational activities such as recycling. Students distribute dead leaves around locals as manure. We focus our involvement around Lake Namazu, which is in our precinct. We expanded our efforts and are promoting the education of developing resources that can create a sustainable society (ESD).

15 years ago, the student council at Nanbu J.H.S gathered volunteers from our school to begin a cleaning activity for the lake and the neighboring areas. This activity was called “Nama-Tai” which means “the unit of students who want to clean Lake Namazu” and continues today as an opportunity to bond with the region and to help the environment. The number of volunteer students is increasing year after year. The scale has become so large, and the volunteer work has been divided into two places: Lake Namazu and Nanbu campus. The students are rewarded with warm words of thanks from the community of volunteers who “meet to protect Lake Namazu” who work together with our students.

The tree planting committee also plays a key role in keeping the area around Lake Namazu weeded and clear of dead leaves. Students turn the dead leaves and weeds into compost which they use on flowers and other plants on campus or give to locals. We put planters along Atsumi Line and give them to “Kodomo 110” homes and shops. Hopefully our community will boast about “Nama-Tai” and will never end this activity, which is carried out twice a year, because we want to make people in our community and all around Japan aware of environmental problems and their solutions.

2. Objectives of the Project

This school would like to approach initiatives for ESD from the position of environmental conservation. By performing imminent local environmental conservation activities from our junior high school, we hope to deepen interest in environmental problems and want to teach students to be independent, and to think and to forming solutions. Through this program, students will find the values of connecting with people in their community, and we can promote the underlying ability to share.

Our school work on “Nama-Tai” and other recycling activities, such as the collection of plastic

bottle caps forces students to pay more attention to the environment surrounding them. We try to not only use extracurricular activities to promote ESD, but also encourage environmental awareness within each subject, so even during class we can cement the practice of environmental conservation and environmental improvement within our student body.

Nanbu J.H.S has the following goals for the following two types of activities.

(1)Activities to conserve the environment around Lake Namazu

- “Nama-Tai” which moves into action twice every year with members from “meet to protect Lake Namazu”
- The creating compost which is done by the tree planting committee and “Nama-Tai”

By working on environmental conservation with the cooperation of students, teachers, and local inhabitants, we can be proud of our area. Students, teachers, and locals alike form an attachment to the community, and rouse attention to environmental issues while making a conscious effort in the beautification of our environment.

(2)Activities to transmit the regular recycling campaign and green campaign to the region

- Twice a year the “flower pot activity” is done by the tree planting committee
- The plastic bottle cap collection is set up by welfare committee

Students distribute flower pots which use the compost students made with the dead leaves collected by “Nama-Tai” to houses within the “Kodomo 110” area, creating a feeling of gratitude all around our community. In addition, students can understand and use critical thinking to improve of the recycling efforts of our resources. Students can also be aware of the world poverty problem through the collection of plastic bottle caps collection.

3. Execution

As stated in the aforementioned objectives, this school will advance its studies of environmental conservation to spread awareness of ESD. We are striving to deepen interest in the local environment, so students go become leaders who create a sustainable society.

Aichi University was established after World War II near Nanbu Junior High School. An elementary school, junior high school, high school and university all came to be in our precinct and there was a great influx of students. The schools, families, and the region became united and worked together to raise responsible children and develop a town around the schools. Without the cooperation of local people, this town might not have been successful. We believe the schools and families of Nanbu area can raise and teach our children to have an interest in environmental problems and use critical thinking to independently create solutions. By encouraging activities they are connected to the community we can raise children to live in harmony with each and the environment.

We make an ESD calendar and practice learning about our region by implementing various extracurricular activities.

(1)ESD Activity Program for Promoting Activities. (Example of 9th grade in academic year 2013)

Subject area	Apr	May	Jun	Jul	Sep	Oct	Nov	Dec	Jan	Feb	Mar
science			Examination of water		Examination of water			Examination of water		Examination of water	
English		Fair Trade Chocolate									
integrated study					Children in the World ~investigate the documents of UNICEF~						
events and activities			Flower Pot	Greeting cards	Nama-Tai					Nama-Tai	

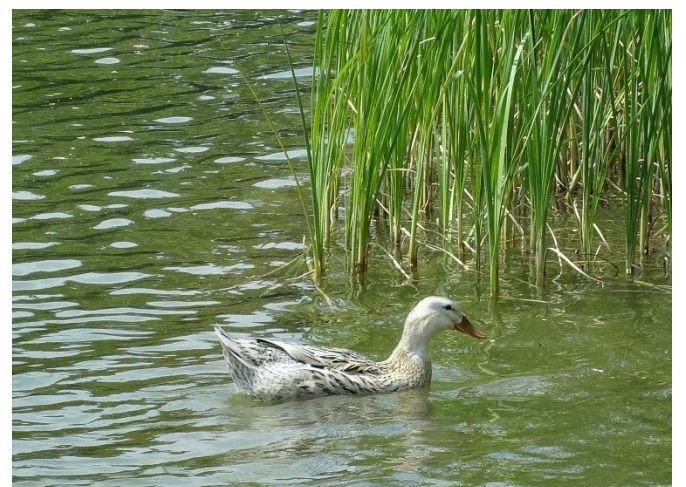
(2)Activity to conserve Lake Namazu's environment (Nama-Tai)



Students clean the lake and collect dead leaves or dead twigs.



Students clean the lake with locals



The goal is to make the lake clean enough for animals and plants live comfortably

(3)Activity to send periodical campaign and tree planting activities to local people



With the dead leaves which “Nama-Tai” collect as compost. A tree committees send the flower pot with the compost to the houses of the child 110.

(4)Form relationships with local people



Led by a welfare committee, students send summer greeting cards to elderly people in Yayoi Ohjuen (the elderly welfare institution).

Type of materials to be used

- The Handbook of Junior High School Career Education, Ministry of Education, Culture, Sports, Science and Technology, March 2012 (Web version)
- Basic plan for promotion of education in Toyohashi City, Toyohashi City Board of Education, 2012
- A handbook for promoting career education called *Career Education for the Nine Years of Elementary and Intermediate School*, Aichi Prefecture, Board of Education, Compulsory Education Section (Web Version)
- Career Education Notebook: a Navigation Notebook for Finding your Dream and Fulfilling your Dream, by the Aichi Prefecture Board of Education (Web version)

Is there any type of evaluation to examine the effects of the project on students' comprehension and attitudes?

Our evaluation is done as follows:

- The students' understanding of different subjects is evaluated by soliciting their own summary or opinions, to see if they can not only grasp the information, but also convey their thoughts.
- Students also make a newspaper or presentation of what they learned and we can evaluate the final project.

The following is also conducted to further enhance ESD activities.

- We have an “improvement questionnaire about this school's education” for students, their guardians, the staff of this school and people in the community. We give the results to the school discussion committee and receive advice from them.
- In order to fit in the students' curriculum and to the needs of the community, the ESD calendar is reviewed yearly and activities are improved or added to give students the best opportunities.

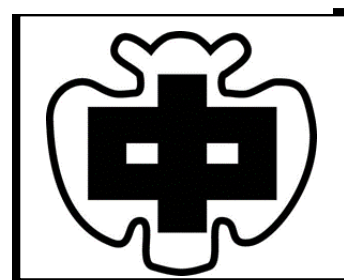
On behalf of my institution, I apply for participation in the UNESCO Associated Schools Project and give the assurance that this institution will make an active contribution to the Project, as outlined above, for a minimum period of two years. At the end of every year, I shall submit a report of the Project to the ASP National Co-ordinator of my country.

/ / 2014
Date (日付)

Principal's name
Position Principal
Institution's name
Toyohashi Nanbu Junior High School

School Overview

School seal



1. **Name of School**
Toyohashi Nanbu Junior High School

2. **Location, etc**
1-4 Higashiura Kitayama, Toyohashi -shi, Aichi
Japan 441-8105
TEL: 0532-45-1228
FAX: 0532-44-1373
URL: <http://www.nanbu-j.toyohashi.ed.jp/nanbu-j/index1.htm>
e-mail: nanbu-j@toyohashi.ed.jp

【Access】

- Take the Atsumi Line, get off the train at Minamisakae Station and walk for five minutes
- Take the Toyotetsu Bus, Ohsaki Line, get off the bus at Jishukan Koukou Mae bus stop and walk for six minutes

3. **School size**

- Number of classes : a total of 25 classes including 22 regular class, and 3 special needs class
- Number of staff members : a total of 58 including one principal, one vice-principal, two office manager, 43 teachers, two school nurse, five part-time teachers, two school lunch staff, and two janitors
- Number of children : a total of 806 children including 397 boys and 409 girls

4. **Education at this school**

(1)Local History

Yoshida feudal clan was set up in Toyohashi in the Edo era, and Toyohashi prospered. The education institution for the feudal (Jishu-kan) building was put in Yoshida Castle by a feudal lord Matsudaira Nobuhuku in 1752, but it was abolished in 1872, and private continuation school (Jishu-kan) was established in Nanbu area. It became Toyohashi Jishukan High School in 1948.

A lot of pines grew thick in the area, but they were farmed for their pine oil, which was sent to a refinement factory due to a lack of supplies. The environmental damage that caused is still visible. In postwar 1946, Aichi University was established and many students enrolled. Now, we have an elementary school, junior high school, a high school, a school for the hearing impaired and a university. This town prospers as a town focused around the students of Toyohashi.

(2)Educational goal of the school

Students can learn by themselves

Students are polite

Students are strong and tough

[School mottos]

ONE FOR ALL ALL FOR ONE

(3)AIM (Raise students who are)

We advocate “One for All, All for One” as a slogan at this school. In learning and living, our aim is “Raising students who can take good care of friends and themselves.” We make opportunities that students exchange their opinions and the thing that they checked and learned with as to learning in a class and bring up the figure which students learn by themselves. We put five rules during the class called “Mananbu-gokajo” on all classrooms and work on a class and talks while confirming them regularly. By doing so, students become able to tell their opinion properly and hear the opinion of the partner seriously.

(4)Management Policy

Based on the cooperation with home and the region, we develop an instructional activity to bring up the power to be valid to the students.

- ①We have pleasant classes to understand and plan the certain fixation of basic-like contents.
- ②We support the independent activity of the students positively and plan upbringing of the rich mind and body which can experience an impression and a definite aim.
- ③ “Cherish the harmony among people.” Through this saying, we plan making the group of teachers who devote itself to education proudly.

(5)The focal points for this year

- ①It is underlying and through solution to the problem learning and experience-like learning, plans the certain fixation of basic contents.
- ②We expand moral education, human rights education, caring and bring up a rich heart.
- ③We plan improvement of activity and health instruction, nourishment instruction of physical education that assume a class for upbringing a stout body.
- ④Upbring the power think about way of life and choose one’s course independently through the work experience.
- ⑤We perform enforcement training based on the correspondence manuals such as a disaster or the case and maintain the crisis control system.
- ⑥We perform the information dispatch to home, the local people positively and utilize a local education power positively and plan the embodiment of bringing up the students with the region.
- ⑦It is premeditated and perform the training of the staff systematically and tries for improvement of staff’s ability and the improvement of the class.

In order to promote ESD, we work on a problems sitting astride in a subject during period for

integrated learning, and many aspects that are necessary for a leading figure of the sustainable society bring up synthesis-like view or intelligence, analytical ability. In value the characteristic of an aim of the period for integrated learning and the conventional principal school and catch the integrated learning as follows.

- a. Through learning about person and thing, students strengthen the way of life of the self.
- b. Under the program for the year of the contents domain about course and two contents domains pillar based on the grade theme, we bring up ability for solution to the problem of the students.